

# RE-ENGAGING & RE-IMAGINING LEARNING

Southampton County Public School Division  
Resumption Plan

# SOUTHAMPTON COUNTY PUBLIC SCHOOLS

**Division Superintendent**  
**Dr. Gwendolyn P. Shannon**

1

Highlights from  
School  
Resumption  
Committee

2

Health and  
Mitigation Plan

3

Instructional  
Plan

4

Summer School  
Plan

5

Fiscal  
Responsibility

# Southampton County Public Schools

## **Mission**

The mission of Southampton County Public Schools through the combined efforts of staff, students, families, and the community is to ensure a quality education in a safe environment that will prepare students to be successful learners and productive citizens in an ever-changing society.

## **Vision**

The vision of Southampton County Public Schools is that all students will be successful, productive, lifelong learners in an ever-changing world.

## **Goals During School Resumption Post COVID-19 Closure**

Continuity of Health and Wellness (Division Health Plan)

Continuity of Resources (Technology & Transportation)

Continuity of Learning (Blended Learning Model)

Continuity of Nutrition (Food Distribution)

# Committee Members

Allison Francis  
Alger Nichols  
Debra Hicks

Grayson Drake  
Jennifer Peace  
Kisha Watford

Lauren Jernigan  
Linda Drake  
Shellie McHenry

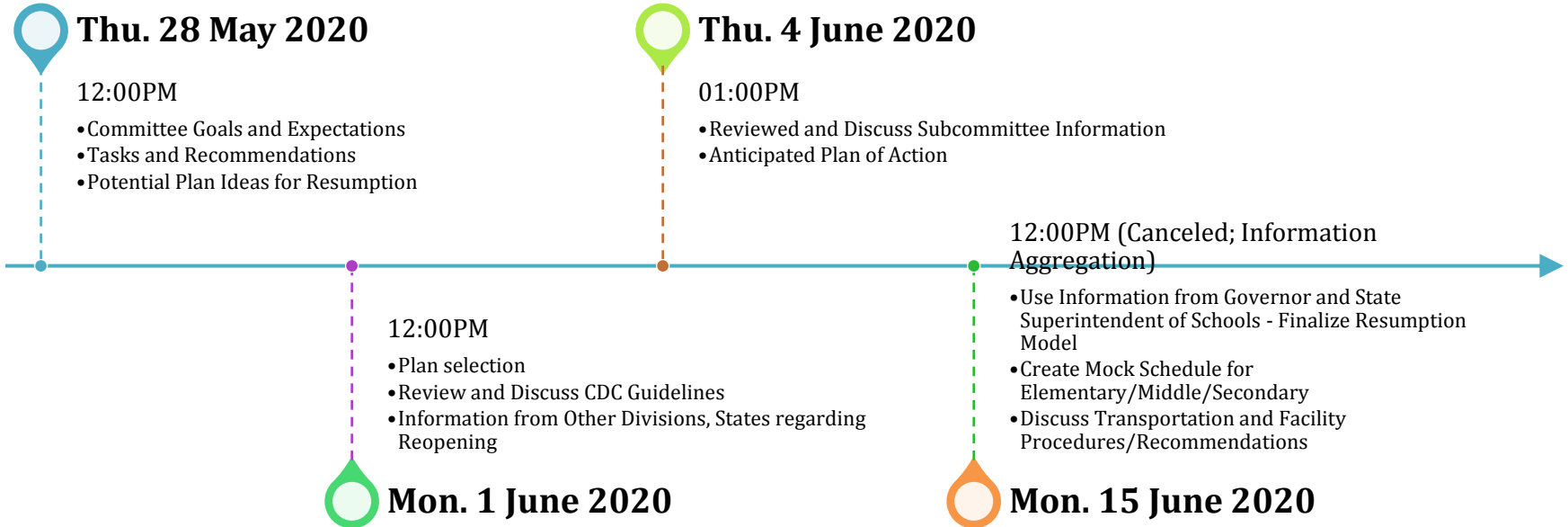
Tamee Railey  
Tim Mason

Vernetta Willoughby  
Annette G. Walters

# School Resumption Committee Goals

The goal of the Southampton County Public Schools' Resumption Committee is to facilitate the reopening of all seven SCPS facilities within the division in a manner that is safe, cohesive, health conscious, supportive of students, faculty, and staff through the use of research and group consensus.

# School Resumption Committee Meetings



# School Resumption Considerations

## Full Immediate Resumption

- While this was considered, the health and safety of students, staff, and the community was considered to be at-risk with this approach
- Requires:
  - Appropriate Social Distancing
  - Frequent & Thorough Sanitization
  - Reliable Communication

## Blended Model and Gradual Resumption

- Different forms of this model was discussed including:
  - Staggered resumption model
  - Alternating days with a day for enrichment
  - Modified time to include early dismissal of students
- Quarter schedule for resumption where the plan will be followed for a full nine weeks to allow for monitoring, planning, student and faculty support, grading, and overall assessment of pandemic response and progression

# Blended Model Format Elementary Schools

## Elementary (PK-5)

- Alternate Days on an A/B Schedule
  - M/W Group A
  - T/R Group B
  - Fridays Alternate Face-to-Face Remediation/Support for Groups A/B
  - Adjusted Schedule to reflect Early Dismissal so that teachers will be able to plan for supporting students during off campus learning
  - Schedule also anticipates using space at the middle and high school based on the approach of resumption at the secondary level

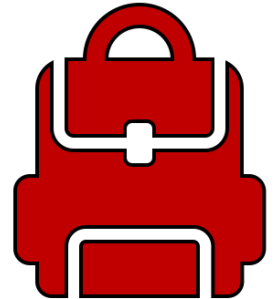




# Rationale for Recommended Model

## Elementary

- Impact on students, staff, families and community
- Maintain health safety and education of learners
- Re-engage learners and recognize that our community has a diverse familial structure
- Concern with transportation recommendations from the CDC
- Anticipated Recommendations from the Governor and State Superintendent of Schools



# Blended Model Format Middle & High School

Secondary (6-12) While we recognize that students and teachers must return to school and work, there are some specific considerations for our community

- SMS/SHS may be needed to support elementary students depending on space requirements per the Governor and State Superintendent of School
- Should that requirement take effect, the following recommendations will be put in place for SMS/SHS
- First Nine weeks reinforce virtual learning
- Assess student access and reinforce training for Schoology
- SMS/SHS Teachers work on a rotating schedule to provide in-person instruction
- Monitor students, families, and teachers' needs and appropriately address
- If the Governor and State Superintendent's allows greater resumption, the model for resumption will be changed



# Rational for Recommended Model



## Secondary

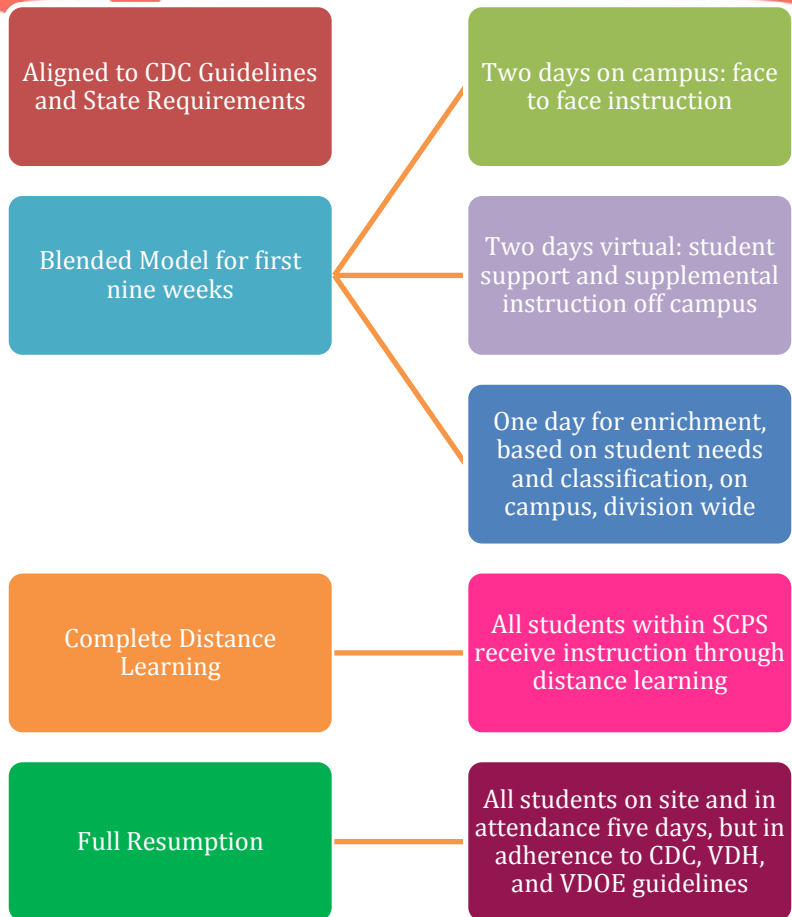
A gradual resumption serves to allow students and families to re-establish academic norms and expectations

This model affords teachers to monitor and adjust for student needs

Support of elementary schools that may require additional spacing to provide instruction

Enrichment provided to all students based on need throughout division

# SCPS Resumption Design



# CDC Guidelines at-a-Glance



**EDUCATE EMPLOYEES  
ON CLEANING AND  
SANITIZATION**



**DEVELOP POLICIES FOR  
EMPLOYEE PROTECTION  
AND PROVIDE TRAINING**



**RESUMPTION  
CONSISTENT WITH  
APPLICABLE STATE AND  
LOCAL ORDERS**

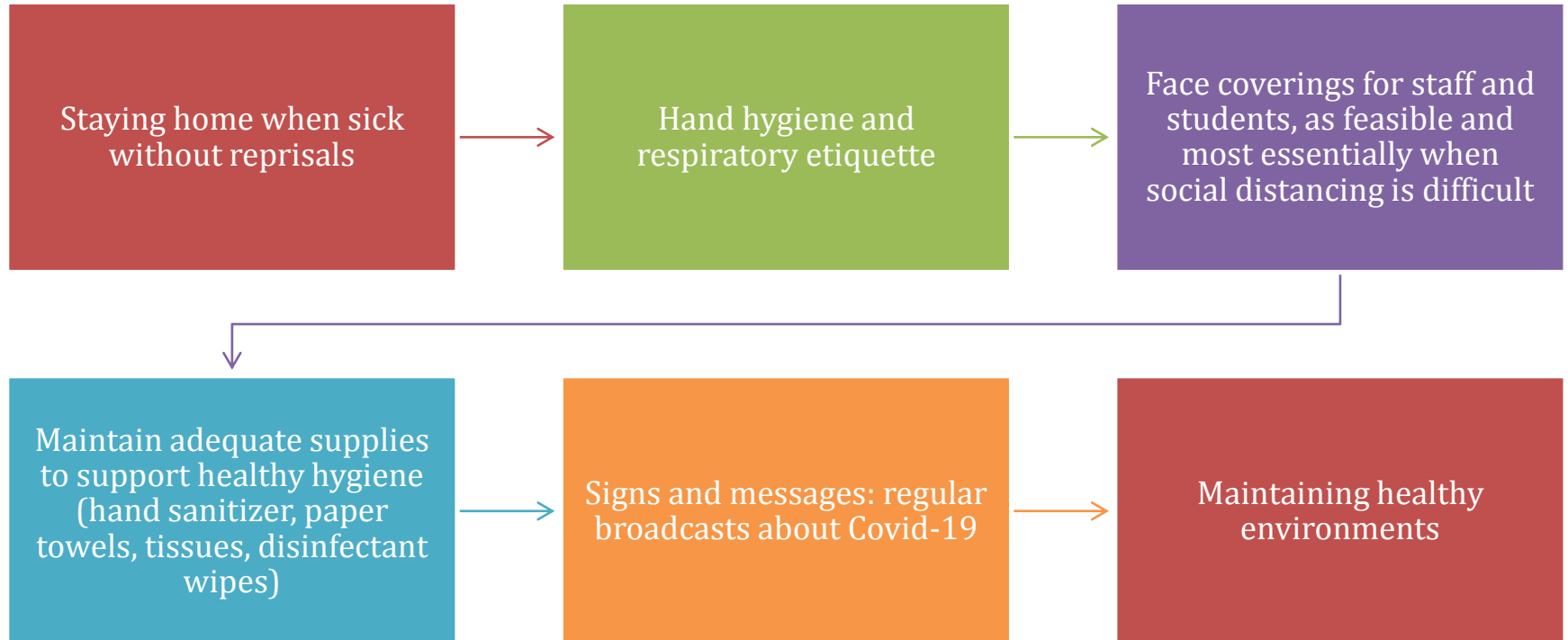


**RECOMMENDED  
HEALTH AND SAFETY  
ACTIONS AND PROCESS  
FOR CONTINUOUS  
MONITORING ARE IN  
PLACE**



**FOLLOW  
RECOMMENDED  
PREVENTATIVE  
MEASURES TO REDUCE  
EXPOSURE**

# CDC Guidelines for Schools



# CDC Guidelines for Schools Continued



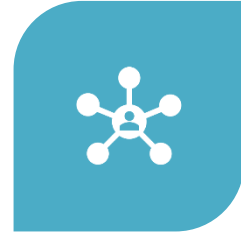
DISCOURAGE USE SHARING  
ITEMS THAT ARE DIFFICULT  
TO CLEAN OR DISINFECT



ENSURE VENTILATION  
SYSTEMS OPERATE  
PROPERLY AND INCREASE  
CIRCULATION OF OUTDOOR  
AIR AS MUCH AS POSSIBLE



MAINTAIN CLEAN, CLEAR,  
AND APPROPRIATE USE OF  
WATER SYSTEMS



MODIFY LAYOUTS: CREATE  
PHYSICAL BARRIERS AND  
GUIDES; CLOSE COMMUNAL  
SPACES

# CDC Guidelines for Schools Continued

Have

Have students bring own lunch or bag/boxed lunches.

Add

Add physical barriers between bathroom sinks and other communal spaces that are not closed

Offer

Offer options for staff and students that are higher risk for severe illness

Limit

Limit nonessential visitors and pursue virtual activities and events in lieu of assemblies, field trips etc.

Identify and create

Identify and create Cohort groups; staggered scheduling

Designate

Designate a staff person to be responsible for responding to COVID-19 concerns



# CDC Guidelines for Schools Continued



Create communication system that aligns to privacy policies and applicable laws



Train all staff on all safety procedures and protocols



Recognize signs and symptoms through daily health checks, if feasible



Provide support and coping strategies for resilience


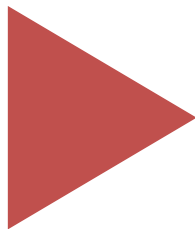
# State and Federal Guidelines

- Information as shared by the Governor and State Superintendent of Schools
- Center for Disease Control and Virginia Department of Health
- Significant financial increase for the division

# Division Guidelines: School Resumption Committee

A decorative red line with several circles of varying sizes, curving across the top of the slide.A large solid red circle containing text.

We recognize the  
unique needs of our  
community

A large solid green circle containing text.

It is the  
recommendation of  
the School  
Resumption  
Committee that the  
division follows the  
following process in  
reopening:

# Transportation Needs

- All school transportation should allow for:
  - Masks
  - Sanitizers
  - Touchless Thermometers
  - Six (6) versus three (3) feet distance
- Costs associated with transportation modifications including:
  - Increase transportation personnel (Drivers/Aides)
  - Buses
  - Fuel



# Building Needs



- It is the recommendation of the committee that all schools in the division maintain:
  - School Sanitization procedures and supplies for teachers
    - Masks
    - Sanitizers
    - Student Dividers
    - Touchless Thermometers
  - Building and Classroom procedure

# Faculty Needs

## Health & Wellness Services

- Health Screening
- Designated Isolation Area
- Faculty

## Training & Professional Development

- Students: Re-entry Expectations/Schedule
- Parents: Health Safety/Student Support
- Teacher: Socioemotional Support; Grading; Trauma Centered Classroom; Educator Support

## CDC/State guidelines

- Current update and guidelines

# Student Needs



HEALTH AND  
WELLNESS



SCHOOL AND CLASS  
EXPECTATIONS



GRADING POLICY  
AND PRACTICE



SUPPLEMENTAL  
SUPPORT AND  
SERVICES



TRANSPORTATION  
AND SCHEDULING

# 2021-2022 Mock Student Re-entry Procedures



## **AM Bus Pick Up (*Transportation Plan*)**

*Health Screening*

*Designated Isolation Area*

*Parent-School Communication*



## **PM Bus Pick Up (*Transportation Plan*)**

*Health Screening*

*Designated Isolation Area*

*Parent-School Communication*



# Scheduling

Blended Model Weekly Schedule				
Monday	Tuesday	Wednesday	Thursday	Friday
Group A Students In-School All Day	Group A Students In-School All Day	Group B Students In-School All Day	Group B Students In-School All Day	Teachers Professional Development  Half Day Planning  Half day Interventions
Group B Students Distance Learning	Group B Students Distance Learning	Group A Students Distance Learning	Group A Students Distance Learning	

## Blended In-School and Distance Learning Student Focus

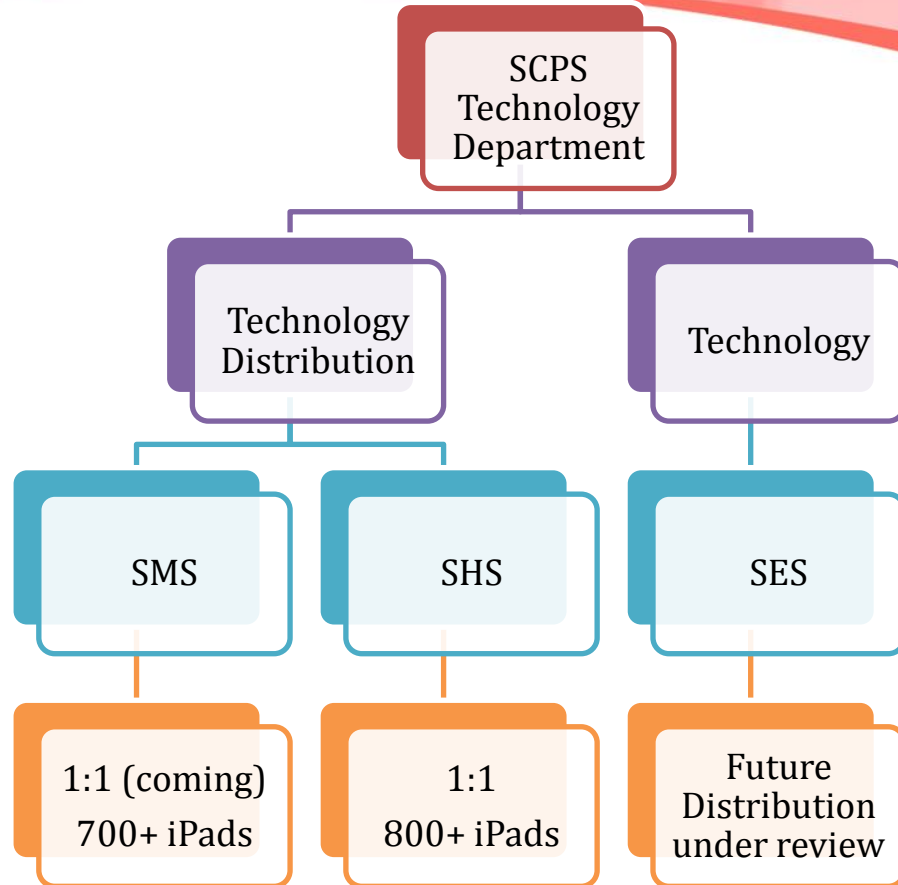
Elementary School	Middle School	High School
<ul style="list-style-type: none"> <li>English</li> <li>Math</li> <li>Science</li> <li>History</li> <li>Resources (music, art, physical education)</li> </ul>	<ul style="list-style-type: none"> <li>English</li> <li>Math</li> <li>Science</li> <li>History</li> <li>Student selected electives</li> </ul>	<ul style="list-style-type: none"> <li>Courses which students selected for their four block schedule</li> </ul>

# Technology

The technology department will work with building leaders, staff, and students on training, to include, proper care, and effective use to minimize cost, enhance equity life, and maximize health and safety.

In addition, while the drive for distance learning during the COVID-19 pandemic continues to impact the traditional learning environment, the technology team continues to work to provide an online/virtual/distance learning experience for staff and students that is safe and secure in the remote environment, so as to mitigate potential issues that may arise from compromising confidentiality, privacy, and safety.

# Technology Distribution at a Glance



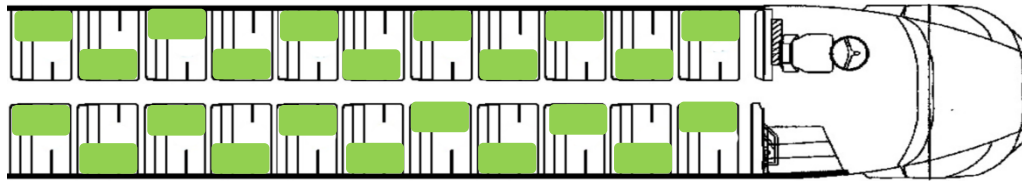
## Supplemental Technology

1. Hotspots: 80+ Students Distributed
2. Access Point Extensions throughout Division
3. Additional Costs to Increase Access and Equipment
4. Planned Distribution Expansion for Grades 4<sup>th</sup> through 5<sup>th</sup>

# Transportation

Understandably, parents, families, and educators are all concerned about the health and well-being of all children within the school division of Southampton County Public Schools.

The health and safety of each child and each staff is of the utmost priority. While we are required to follow the directives of the Governor, State Superintendent of Schools, Center of Disease Control, and the Virginia Department of Health, it is the intent of Southampton County Public Schools' Resumption Committee to consider all aspects of school re-opening in a manner that is safe for all students and staff.



In response to the required changes there are several options for school opening that were considered with the current spacing and distance that have been recommended.

# Transportation Practices

Practices and Procedures  
(Detailed in SCPS Health Plan)

- AM Pick-up to PM Drop off
  - Driver/Aide Self Check and Report (AM/PM)
  - Student Wellness Screening by SCPS Representative
- Parent/Caregiver Contact
  - Parent Contact
- Sanitization Practices
  - After each route completion (AM/PM)
- Training
  - Required for all transportation staff
  - SCPS Personnel
- Driver Safety (Transportation Plan)
  - PPE
- Costs Analysis (see Health and Transportation Plan)
  - Division
  - Building



**Three (3) Feet Distance**



**Six (6) Feet Distance**

# Considerations

- The longer students are out of school increases potential for harder transition back to academic expectation
- Health and safety of all students with heightened concern for teachers and students who are at high risk of exposure
- Staff and student attendance requirements
- Student schedules
  - Dual Enrollment
  - Advanced Placement
  - Advanced courses
  - Electives
- Athletics



# HEALTH PLAN

# **SOUTHAMPTON COUNTY PUBLIC SCHOOL DIVISION**



**2020-2021 COVID-19 Health Plan**



# Overview

Per an order from the Virginia Public Health Commissioner, each private and public school division must develop a plan for implementing COVID-19 mitigation strategies before reopening in accordance with the *Virginia Phase Guidance for Schools*.

# Student & Staff Absences

- Every absence will be filed along with recording of answer to questions of the *SCPS Health Screening Questionnaire*.
- Files will be maintained at home school & in duplicate with district nursing supervisor.
- Any individual returning from illness related absence will be evaluated for next 10 school days by school health professional.
  - Daily Monitoring Log from VDH will be utilized for this process.

# Communication

- Staff will have educational modules on COVID-19 mitigation strategies during pre-school in-service dates in August.
- Videos and literature will be made available to parents and staff prior to school opening and will be posted on the SCPS division's website.
  - Student information will be sent prior to opening of school.

# Communication Continued

- All announcements and informational pieces from the division will be distributed through SCPS website, app, remind, handbook, social media and individual school-based accounts.
- If there is a positive case or outbreak detected at a school, the division will cooperate with the local health department in notifying individuals and community members.

# Health Services

- SCPS has begun the practice of ordering medical grade PPE items (gloves, masks, smocks) to ensure they are in stock and available for health services staff.
- The Western Tidewater office of the Virginia Department of Health has offered to assist in outfitting SCPS with medical grade PPE.
- The Western Tidewater office of the Virginia Department of Health has offered to train SCPS's head nurse with focus on case investigation, protocols and what exposure looks like.

# Mental Health Services

- Southampton County Public Schools student services will develop a social-emotional wellness assessment to be deployed within our schools.
- Students exhibiting needs based upon this assessment will receive services from SCPS guidance counselors.

# Education and Training

Literature and educational videos for physical distancing, facial coverings, hand hygiene and respiratory etiquette, have been curated for students and staff.

- This will include but not be limited to; procedures, expectations, & guidelines for hand-washing, coughing/sneezing, symptomatic individuals, and daily health screen routines.
- These informational items will also appear as guidance and signage displayed strategically throughout each school and on each school bus.

# Face Coverings

In accordance with the recommendations of the CDC, World Health Organization, and American Academy of Pediatrics, Southampton County Public School's staff and students, will maintain six feet of physical distance to the greatest extent possible.

However, if six feet of distance is not feasible (inclusive of buildings and school buses), individuals will implement the combination of face coverings and a minimum of three feet distance between everyone present.



# Modifying Layouts for Social Distancing

- Buses
  - Students will be placed one per seat, with markings in seats to show where to sit.
  - Students from the same household will be allowed to sit together, provided proper distancing is maintained for others.
- Classrooms—classrooms diagrams will be provided to ensure proper desk spacing/distancing.
  - Communal supplies will be replaced with individual sets of supplies.
  - Devices will be utilized at all schools to aide in the elimination of communal instructional supplies.

# Modifying Layouts for Social Distancing Continued

- Communal Areas
  - Multiple locations for meals will be established.
  - Hallway travel will be scheduled and monitored to limit interaction between classes.
- Restrooms
  - PreK-1 classrooms have classroom bathrooms
  - Communal bathrooms
    - Limit of three students in restroom at one time
- Temporary hall monitors will be utilized at each school to ensure the distancing and gathering measures are being followed.

# Food Service

- Meal service will be changed from “choice” to “serve” model.
  - Students will not choose their meal components but will be given a complete meal.
- Distribution will take place at designated areas, where students will pick up their meals.
- Meals will be eaten in classrooms.
- Outside meals are not encouraged by VDOE.
  - If students do pack their own lunch, lunch boxes will need to be disinfected.

# Large Gatherings

- If large gatherings are necessary, they will follow spacing, facial covering, and size limits in current guidance.
  - Currently
    - 250 individuals
    - 6' spacing or
    - Combination of 3' and facial coverings

# Physical Activities and Athletics

- Currently, playground equipment is not recommended for use due to its difficulty to be cleaned and sanitized effectively.
- Physical activity in open spaces is encouraged, as long as 10' spacing can be maintained.
- Currently, athletics are limited to practices that are skill building drills or conditioning activities.
  - Participants must be kept under 50 and must keep 10' of distance during workouts.

# Daily Health Screenings

- Each day upon arrival all staff and students will be given a health screening.
  - Temperature taken
  - Questions
  - Yes answers will trigger further screening.

**“In the last 24 hours have you experienced any of the following?”**

- Fever or Chills
- Cough
- Shortness of Breath
- Fatigue
- Body Aches
- Headache
- Loss of taste/smell
- Sore throat
- Congestion/Runny Nose
- Nausea
- Diarrhea

# Hygiene Practices

- Custodians will have cleaning check lists for high touch surfaces throughout the school.
- All vehicles will be sanitized prior to student pickup and after drop-off.
- Classroom cleaning supplies, hand sanitizer, and disinfectant wipes will be supplied to all classrooms.
- Additional hand sanitizer stations will be deployed at each school.

# Practices for Sick/Exposed Individuals

- SCPS will coordinate with local VDH office to determine if a student or staff member exhibiting symptoms will need to self-isolate.
  - If a student is required to self-isolate, the school will make all efforts to ensure that, given the student is able, the continuity of instruction will continue for the student.



# Continuity of Operations

In the event that the custodial or food service staffs are affected with illness to the level that services are impacted, SCPS will utilize local temporary employment agencies and state contracted agencies to ensure school operations continue.

# Updating Policy

- Currently, there is a Teleworking Policy in place for SCPS employees.
- Student handbooks will be supplemented to address COVID-19 concerns for students.
- SCPS will work with VDH to develop official policy to establish return to work/school for all staff/students.

# Preparation for Sick Individuals

- Isolation rooms will be established at each school.
  - Rooms will be strategically selected within each building to limit the amount of movement and possible contact with others.
  - Rooms will be for all staff/students that exhibit symptoms entering the building or during the school day.
  - Rooms will be disinfected immediately after the individual exhibiting symptoms leaves the room.
- Transportation home will be provided for staff/students that are not able to secure their own transportation.
- Medical grade PPE will be used by those supervising/ evaluating/ transporting symptomatic individuals and those cleaning used isolation rooms.
- Thorough cleaning will follow the contact trail of the ill individual.

# Plan for Reduction of In-Person Instruction

If in the course of the school year, the local health department or Southampton County Public Schools determines that the current community conditions negatively impacts the safety of students and staff schools will follow alternative plans for the continuity of instruction as outlined in the SCPS return to instruction plan.

# Conditions that will Determine Complete School Closure

- If a person with a confirmed case of COVID-19 has entered a school building, school will be halted for 2-5 calendar days for all students, in accordance with local health department guidance.
- Decisions on which, if any, staff should be allowed in the school during the closure will be made in collaboration with local health officials.
- It will be during this closure time that the local health officials will decide if a longer closure is necessary.

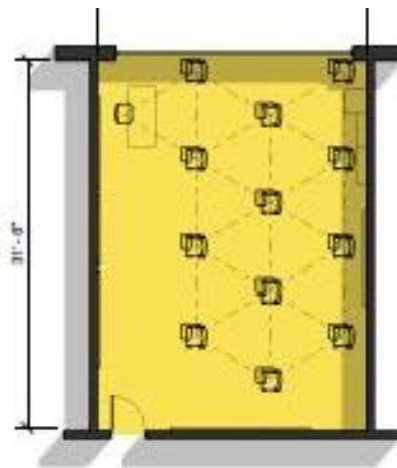
# Sample Classroom Diagram

7'-6" grid



**ELEMENTARY SCHOOL CLASSROOM**

- 860 SF CLASSROOM
- 10 STUDENTS
- 7'-6" DISTANCING



**MIDDLE & HIGH SCHOOL CLASSROOM**

- 750 SF CLASSROOM
- 12 STUDENTS
- 7'-6" DISTANCING

# Sample Bus Diagrams

## Southampton County Public Schools



77 Passenger School Bus  
1 student per seat: 26 capacity  
1 student every other seat: 13 capacity



## Southampton County Public Schools



65 Passenger School Bus  
1 student per seat: 22 capacity  
1 student every other seat: 11 capacity



# Proposed Budget

Facilities	Carpet Cleaning-- 2 cleanings per year.	\$60,000
Facilities	Signage	\$11,000
Facilities	Thermal Imaging Stations	\$42,500
Facilities	20 Additional radios	\$6,000
Facilities	50 Additional Trashcans	\$1,500
Facilities	Additional Trash bags	\$6,500
Facilities	8 Front office acrylic barriers	\$1,040
Facilities	Disinfectant solution for ULV foggers	\$1,360
Facilities	8 ULV Disinfectant Foggers	\$6,400
Facilities	Convert water fountains to water bottle filling stations	\$36,610
Facilities	Temporary Hand Sanitizer Stations	\$1,380
Facilities	Protective Plastic Barriers	\$27,200
Personnel	Temporary Additional Bus drivers	\$248,000
Personnel	Temporary Additional Bus Aides	\$228,000
Personnel	8 Temporary Custodians	\$160,000
Personnel	12 Temporary Hall Monitors	\$144,000



# Proposed Budget

Personnel	6 Temporary Certified Nursing Asst.	\$72,000
Personnel	31 Additional Bus Drivers	\$496,000
Personnel	31 Additional Aides	\$186,000
Supplies	Touchless Thermometers \$40/each	\$5,200
Supplies	Individual Thermometers for students	\$1,050
Supplies	Cloth Facial Coverings for all	\$10,395
Supplies	Hand Sanitizer-individual for all	\$4,565
Supplies	Hand Sanitizer-individual for all classrooms	\$25,000
Supplies	Class sets of outdoor activity supplies	\$10,440
Supplies	Spray bottle & solution for all classrooms	\$7,500
Supplies	Additional Paper Towels for all classrooms for cleaning	\$10,000
Supplies	Canister of disinfectant wipes for all classrooms	\$21,350
Supplies	Facial Tissue for all classrooms	\$7,200
Transportation	31 Additional Buses	\$3,193,000
Transportation	Option 3 (3 ft) Diesel Fuel (\$274,000)	
Transportation	Option 3 Diesel Fuel	\$548,200
Total:		\$5,579,390



# INSTRUCTION

# **SOUTHAMPTON COUNTY PUBLIC SCHOOL DIVISION**



**2020-2021 Instructional Plan Options  
for School Resumption**

# Option 1 Distance Learning



Complete Distance  
Learning

All Students within the  
SCPS division will receive  
instruction through  
distance learning

# Option 1 Distance Learning

## SYNCHRONOUS LEARNING

Live webinars

Instant messaging

Video conferencing

Virtual classrooms



STARTKIWI.COM

Synchronous Learning

## ASYNCHRONOUS LEARNING

Email

Blogs

Pre-recorded video lessons/webinars

Online discussion boards



Learning Management Systems (LMS)



STARTKIWI.COM

Asynchronous Learning

# Option 1 Distance Learning

- Expose students to standards-based skills and content.
- Students will have to access grade-level and age-appropriate subject-matter content.
- Monitor students' academic progress including adapting adequate progress monitoring and provisions for instructional support, which includes assessment and evaluation of work.
- Continue assessing students and assigning grades in continuation of Southampton County Public School Division's grading policies.

# Option 1 Distance Learning

- PreK-12 students will be provided instruction through virtual learning . All standards will be covered by adjusting the pacing and grade-level curriculum.
- Instructional packets will be provided if needed.
- Professional Development

# Option 1 Distance Learning Instructional Budget

**Total: \$1,172,000**

Item Description	Cost
Professional Development	\$30,000
Leveled Books	\$42,000
One-to-One iPads for Grades PK-8	\$800,000
MiFi Internet Access and Service	\$24,000
100 MiFi Devices	\$36,000
Materials and Supplies	\$40,000
Additional Technology Staff	\$200,000



# Option 2 Blended Learning



```
graph LR; A[Blended Model for first nine weeks] --- B[Two days on campus: face-to-face instruction]; A --- C[Two days distance learning: students receive instruction and support off campus]; A --- D[One day for enrichment, based on students' needs and classification, on campus, divisionwide];
```

The diagram illustrates the 'Option 2 Blended Learning' model. A central blue box on the left, titled 'Blended Model for first nine weeks', is connected by three orange lines to three colored boxes on the right. The top box is orange and describes two days of face-to-face instruction on campus. The middle box is light blue and describes two days of distance learning with instruction and support off campus. The bottom box is green and describes one day of enrichment on campus, tailored to students' needs and classification, divisionwide.

Blended Model for first  
nine weeks

Two days on campus:  
face-to-face instruction

Two days distance  
learning: students receive  
instruction and support  
off campus

One day for enrichment,  
based on students' needs  
and classification, on  
campus, divisionwide

# Option 2 Blended Learning



Staff will utilize a modified instructional model, which will be driven by the state guidelines, Center for Disease Control (CDC), county, and division needs.

In an effort to minimize health risks and reacclimate students to the learning environment, a blended design will be used to meet the needs of students from PK-12 where instructional days and times will be modified and adjusted based on health and safety.

# Option 2 Blended Learning



Southampton County Public School Division will have a modified weekly schedule where students are at school for two days and engaging in distance learning for two days with one day designated for support and enrichment for students with exceptionalities or those identified as needing additional supports. A blended model will provide a classroom capacity of 50% with alternating days of onsite and online instruction.

# Scheduling

## Blended Model Weekly Schedule

Monday	Tuesday	Wednesday	Thursday	Friday
Group A Students In-School All Day	Group A Students In-School All Day	Group B Students In-School All Day	Group B Students In-School All Day	Teachers Professional Development or Half Day Planning  Half day Enrichment and Interventions
Group B Students Distance Learning	Group B Students Distance Learning	Group A Students Distance Learning	Group A Students Distance Learning	

# Option 2 Blended Learning

Group A will attend school in person on Mondays and Tuesdays, and participate in distance learning on Wednesdays and Thursdays. Group B will attend school in person on Wednesdays and Thursdays and participate in distance learning on Mondays and Tuesdays. Teachers will provide in-person and virtual instruction including extra support for individual students. Students in the same household will be in the same group. Fridays are designated for teacher planning, synchronous, teacher-led small-group interventions and asynchronous distance learning.

# Elementary

Monday	Tuesday	Wednesday	Thursday	Friday
Group 1	Group 1	Group 1	Group 1	Planning Day
Social and Emotional Focus		Social and Emotional Focus		Teachers
English Language Arts: Phonemic Awareness/Phonics, Reading, Vocabulary, Fluency, Comprehension, and Writing		English Language Arts: Phonemic Awareness/Phonics, Reading, Vocabulary, Fluency, Comprehension, and Writing		
Small Group Reading		Small Group Reading		
Project Based Lessons for Science and Social Studies		Project Based Lessons for Science and Social Studies		
Math review of previous objectives taught in the 2019-2020 school year integrated with new content.		Math review of previous objectives taught in the 2019-2020 school year integrated with new content.		Half Day Planning
Small Group Math		Small Group Math		Half day Interventions
Resources: Physical Education, Music, Art, and Library		Resources: Physical Education, Music, Art, and Library		
Wednesday	Thursday	Wednesday	Thursday	
Opportunities to review previously taught material with differentiated instruction to strengthen understanding of concepts and skills		Opportunities to review previously taught material with differentiated instruction to strengthen understanding of concepts and skills		

# Blended In-School and Distance Learning Student Focus

## Elementary School

- English
- Math
- Science
- History
- Resources (music, art, physical education)

## Middle School

- English
- Math
- Science
- History
- Student selected electives

## High School

- Courses which students selected for their four block schedule

# Option 2 Blended Learning

**Total: \$1,014,635**

Item Description	Cost
Professional Development	\$30,000
Leveled Books	\$42,000
Additional Teachers	\$260,635
One-to-One iPads for Grades 4-8	\$500,000
MiFi Internet Access and Service	\$24,000
50 MiFi Devices	\$18,000
Materials and Supplies	\$40,000
Additional Technology Staff	\$100,000



# Option 3 Full Resumption



Full Resumption



This model anticipates all students will be on site and in attendance five days, but with adherence to CDC, VDH, and VDOE guidelines

# Option 3 Full Resumption

- All students will return to school Monday-Friday.
- All students will receive in-person instruction with strict social distancing, which may require alternative schedules.
- Technology, transportation, communication, and processes and systems will be the same as with the blended learning option.
- Teachers, students, and families will receive professional development

# Option 3 Full Resumption

- ❖ Transportation
  - 6 feet of distancing would require 84 buses running double routes
  - 3 feet of distancing would require 42 buses running double routes
- ❖ 87 additional teachers will be needed to follow guidelines for social distancing of 6 feet.
- ❖ 20 additional teachers will be needed to follow guidelines for social distancing of 3 feet.

# Option 3 Full Resumption

**Total: \$6,442,811.25 – 6 Feet**

**Total: \$2,057,157.00 – 3 Feet**

Item Description	Cost
Professional Development	\$30,000
Leveled Books	\$42,000
87 Additional Teachers 6 feet distancing	\$5,688,811.25
20 Additional Teachers 3 feet distancing	\$1,303,175.00
One-to-One iPads for Grades 4-8	\$500,000
MiFi Internet Access and Service	\$24,000
50 MiFi Devices	\$18,000
Materials and Supplies	\$40,000
Additional Technology Staff	\$100,000

# Technology

Southampton County Public School Division will make every effort to ensure all students are provided with access to high-speed internet, computer devices, and the division's online learning platform, Schoology. Southampton County Public School Division distance learning platform and the division's online learning program, Schoology. Students in grades 4-12 will be provided with division owned iPads.

# Communication

Communication will be key to successful implementation of our 2020-2021 Instructional Plan for School Resumption. Southampton County Public School Division will frequently communicate with stakeholders through the district website and social media. Parent and student communication will occur through in-person scheduled meetings, phone calls, emails, our learning management system (Schoology), chat, streaming, video, instant messaging, and web conferences.

# Components of School Resumption



## **New Instruction for all Students**

Equity as identified by Southampton County Public School Division includes providing each student with access, opportunities, and support they need to reach their fullest potential. This endeavor includes removing barriers to success, professional development and training for teachers and staff; and the communication, support, and involvement of families, and community stakeholders.

# Components of School Resumption



Professional development is critical to sustaining and maintaining our 2020-2021 Instructional Plan for School Resumption. Professional development for Teachers and staff will include project-based learning, guidance for measuring student goals, interventions, and assessments, practicing personal distancing measures, technology training including Schoology, and virtual teaching. Professional development for students will involve online learning, student expectations for virtual learning, Schoology, and expectations for returning to the school environment. Parents will receive professional development for online and virtual learning, technology, Schoology, and supporting students during the new school year. All stakeholders will receive professional development for understanding social emotional needs for themselves and others.



# Components of School Resumption

## **Remote Learning**

Southampton County Public School Division recognizes the uncertainty of the COVID-19 Pandemic's resurgence and the possibility of schools in the Commonwealth being required to close during the 2020-2021 school year. The Southampton County Public School Division has prepared a blended model for instruction that includes in person and distance learning. This is done intentionally so as to provide a feasible instructional plan for the division that is flexible and able to meet the needs of the Southampton County Public School Division students and the unique needs of the community should a rapid adjustment be required to the division's instructional planning, including extended school closure.

# Review and Considerations



Southampton County Public School Division continues to monitor reopening protocols, expand technology, maintain communication, develop distance learning and blended learning initiatives throughout our schools. All stakeholders working collaboratively will assist in the overall success of the division's 2020-2021 Instructional Plan for School Resumption.



# SUMMER SCHOOL

# **SOUTHAMPTON COUNTY PUBLIC SCHOOL DIVISION**



**2020-2021 Summer School Plan**

# Overview

In the creation of this summer school plan the health, safety, and instruction of our students, teachers, staff, and learning community remains our utmost priority. As prescribed by the State Superintendent of Schools, Dr. James Lane, and the Governor of Virginia, Dr. Ralph Northam, and shared in the *Recovery, Redesign, Restart* plan for Virginia schools, a school task force was formed with practitioners and state leaders throughout the commonwealth to inform state policies on school resumption.

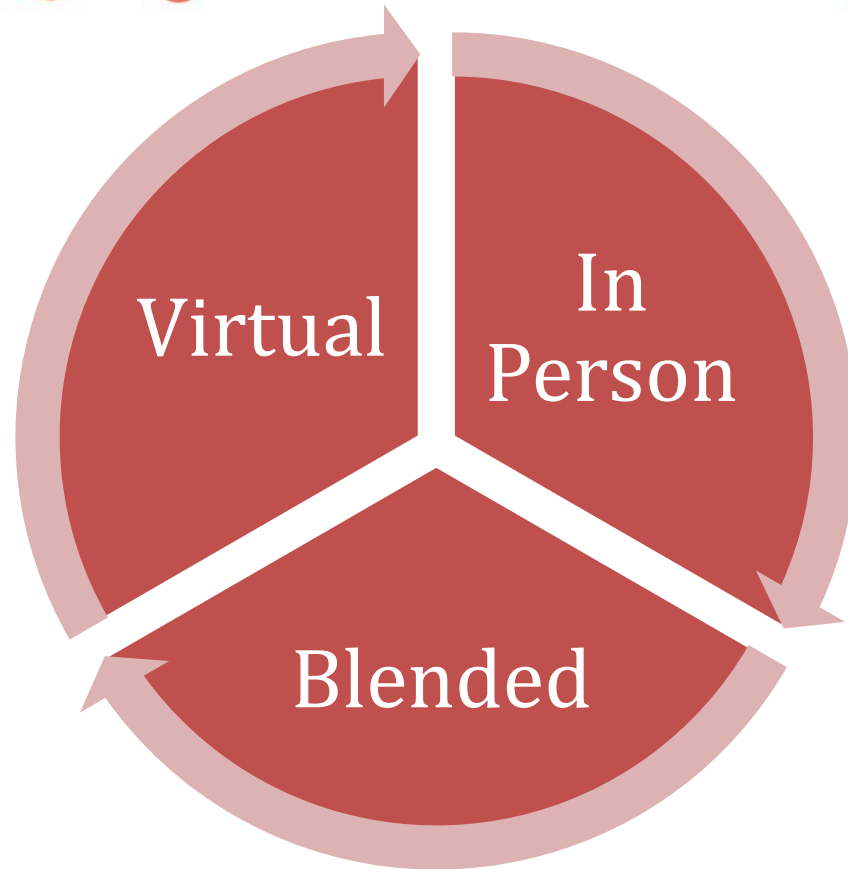
# Criteria & Focus

- The committee selected students based on the highest need, as the number able to attend is limited. The schools determined the highest needs by identifying the students who did not participate or had limited participation in remote/distance learning in Spring 2020. Additionally, elementary teachers provided student recommendations. For Southampton Middle School, benchmark scores, grades, and teacher recommendations contributed to the selection. High school students were selected based on having a failing grade in a class for which a credit is earned.
- The focus of summer school for elementary and middle schools is intense remediation in Reading and Math. High school will focus on those classes in which students were not successful, as indicated by the final grade, and for which a credit is needed.

# Confirmed Numbers

Elementary		Teachers Needed
K	8	1
1	8	1
2	13	2
3	7	1
4	6	1
5	11	2
Total Elementary	51	8
Middle	45	5
High	182	6 many are virtual

# Format Choices





# Option A: In Person Instruction

- Monday through Thursday
- 8:00—1:00
- Riverdale Elementary (Elementary)
- Southampton High School (Secondary)
- Teacher/Student Ratio 9:1

# Considerations for Safety

- Diagram guides **within** classrooms, outlining positioning of desks to allow for appropriate distancing
- The Coordinator of Auxiliary Services & Transportation will work collaboratively with the Western Tidewater office of the Virginia Department of Health to distribute health information through Southampton County Public Schools social media outlets.
- All staff members will wear face coverings in accordance with the governor's proclamation, and in accordance with phased opening of Virginia.
- SCPS will administer screening questions to students as they enter schools.
- Students and staff will be sent home if they exhibit any symptoms of the virus or if they report having been in contact with someone who is infected. Isolation areas in each building for those who have fever or exhibit other symptoms are as follows:
  - Riverdale: Multi-Purpose Room (with partitions)
  - Southampton High School: Band Room

# Other Considerations

- Southampton County Public Schools will disperse official communication from the office of the Superintendent.
- Literature containing hygiene etiquette guidelines has been prepared to send to all households.
- Meals will be served using the Grab N Go procedure for breakfast and lunch (students pick up a bagged lunch and go back to the classroom). Students will wash hands before and after meals. Students will eat in the classroom at their desks.
- According to the *Recovery, Redesign, Restart* plan, Phase III still includes maintaining 3-foot separation for students in vehicles.
  - We have approximately 11 bus drivers.

# Elementary Schedule

8:00-8:30 Arrival/Grab N Go Breakfast/Journal Writing/Temperature Checks

8:30-10:00 Reading (1.5 hours)

10:00-10:15 Restroom Break/Brain Break/Sanitize

10:15-11:30 Math (1 hour, 15 minutes)

11:30-12:00 Lunch in Rooms

12:00-12:30 SEL/Word Study (30 minutes)

12:30-12:50 Recess in Rooms

1:00 Dismissal

# High School Schedule (P.M. Session)

12:35-12:55 Arrival/Temperature Checks/Breakfast

1:00-2:05 Class (1 hour, 5 minutes)

2:05-2:08 Break

2:10-4:00 Class (1 hours 50 minutes)

4:00-4:08 Break/Snack

4:10-5:30 Class (1 hour, 20 minutes)

5:30 Dismissal

# Secondary Schedule

7:35-7:55 Arrival/Temperature Checks/Breakfast

8:00-9:05 Class (1 hour, 5 minutes)

9:05-9:08 Break

9:10-11:00 Class (1 hours 50 minutes)

11:00-11:08 Break/Snack

11:10-12:30 Class (1 hour, 20 minutes)

12:30 Lunch

# Option B: Virtual Learning

- In the event that students are unable to physically attend school, virtual instruction will be provided.
- Teachers will prepare online instruction through Schoology as done in Spring 2020 when the pandemic first occurred.
- Teachers will provide live lessons at a set time and assign work.
- Students will complete the work at home and submit virtually.
- The teacher will have office hours to provide support to students completing work.
- Instruction will incorporate the use of computer-based programs such as IXL, AR, Reading Eggs, Freckle, Adventure Academy, Moby Max, Lalio, etc.

# Option C: Blended Learning

- In this model, students will physically come to school two days a week, Monday and Tuesday, and have virtual learning on Wednesday and Thursday.
- On Monday and Tuesday, the plan for In Person Learning will be followed and on Wednesday and Thursday, the plan for Virtual Learning will be followed.



# Summary of Estimated Cost

Position	Number Required	Each	Total Cost
Teachers (Elementary & Middle)	13	\$2,500	\$32,500
Teachers (High)	6	\$3,281	\$19,686
Paraprofessionals	7	\$1,500	\$10,500
Secretaries	3	\$1,500	\$4,500
Nurses	2	\$1,500	\$3,000
Cafeteria Staff	6	\$1,500	\$9,000
Bus Drivers	11	\$1,100	\$12,100
Bus Aides	11	\$900	\$9,900
Guidance Counselor (Elementary)	1	\$2,700	\$2,700
Administrator (Elementary)	1	\$3,000	\$3,000
Supplies	Varies	Varies	\$10,000
Total Cost			\$116,886



# TRANSPORTATION

# **SOUTHAMPTON COUNTY PUBLIC SCHOOL DIVISION**



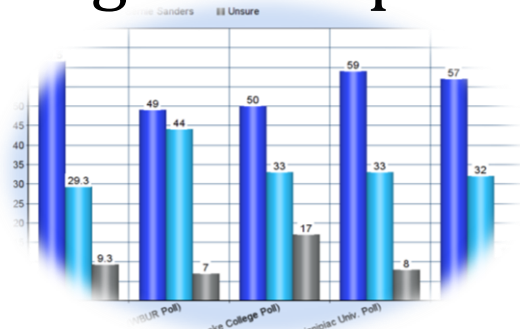
## **2020-2021 Transportation Plan**

# Safety is the Way!

- There are many facets and hurdles that must be addressed in order to provide the safest transportation possible.
- Pupil transportation is a vital component of the education system.
- It is impossible to transport students during the COVID-19 pandemic without implementing changes at the district and school level.

# Optimizing Student Ridership

- Parents will be surveyed to determine the number of students that will require school transportation.
- Parents may choose to transport their children to school until a time when social distancing on the school bus no longer is required.



# Seating



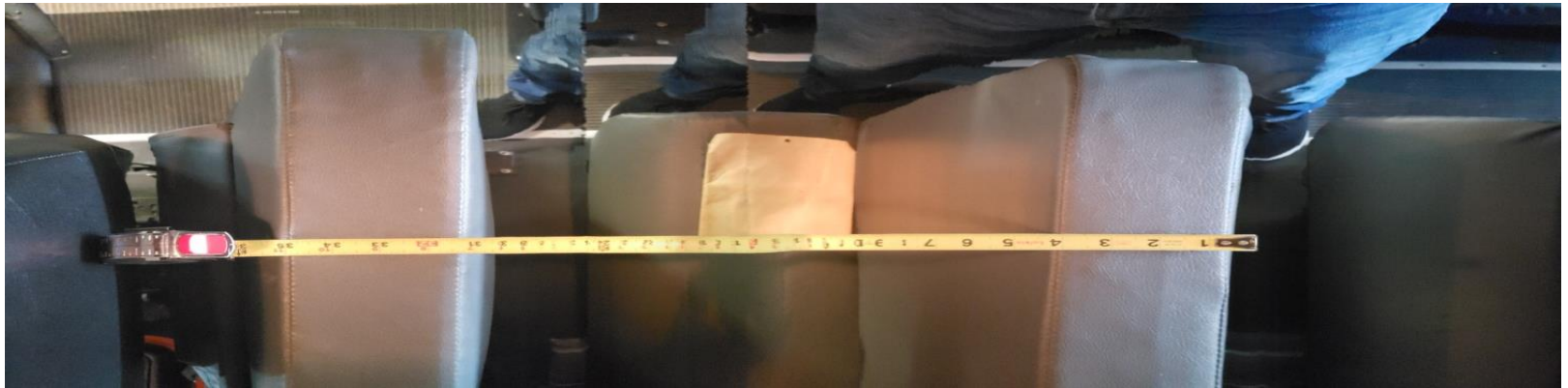
- Each rider shall have an assigned seat. To the extent possible, seats will be filled from back to front when boarding.
- Each bus will have a roster of eligible student riders (passenger manifest) and document the assigned seats for contact tracing.
- During morning routes, rider attendance will be documented on the manifest before unloading at school.
- For afternoon routes, rider attendance will be documented on the manifest before the bus leaves the school.



# Seating with 6 Feet Distancing



# Seating with 3 Feet Distancing







# Temperatures of Students

- All students shall have a temperature screening prior to school entry each day.
- Parents encouraged to take their child's temperatures prior to arrival at bus stop.
- Children exhibiting a fever should be kept at home.
- A bus monitor is required to conduct temperature screening.

# Screening Protocols



- If we have the bus monitors to do the temperature screening, the monitor will take the student's temperature prior to boarding the bus.
- The monitor also can look for other signs of illness prior to the child getting on the bus.
- To ensure the safety of students and staff, when a student presents at the bus with a temperature greater than 100.4 degrees.
- The school district will need to put policies and procedures in place to have the child return home or another designated place of care.

# Screening Protocols

- If a student with a fever must be transported on the bus, the student should be seated at the front of the bus, door side, apart from other students as much as possible.
- Upon arrival at school, the ill student should be escorted to the office where the student will be monitored until the parent or guardian can arrange to pick up the child.
- During the wait period, the student should continue to wear a mask and be isolated from other students and staff as much as possible until released to the parent or guardian.

# Face Coverings



- Students in first grade and up, riding a bus they should wear a face covering to the extent possible.
- Exceptions may be granted on a case-by-case basis when wearing a face covering would compromise the health and safety of the student.
- It will be more difficult to have younger students comply with wearing face coverings, but it will become the norm as they transition back into school.
- Monitors and drivers will need to remind them often and remember that it is new for them, too.

# Hand Sanitization

- Each student should utilize hand sanitizer containing at least 60% alcohol upon entry to the bus.
- Hand sanitizer must not be left in the bus during the hotter seasons due to temperature risk.
- The chosen area cannot interfere with the view of the door, windows or access to emergency equipment.
- Do not mount the sanitizer stations in areas that receive direct sunlight due to potential fire hazards.
- Another option is to have a handheld pump bottle of hand sanitizer that can be removed from the bus at the end of the route.
- The monitor or an older student can administer the hand sanitizer as riders board the bus.





# FINANCES

# Option 1 Distance Learning

Item Description	Cost
Professional Development	\$ 30,000
Leveled Books	42,000
One-to-One iPads for Grades PK-8	800,000
MiFi Internet Access and Service	24,000
100 MiFi Devices	36,000
Materials and Supplies	40,000
Additional Technology Staff	200,000
Total Estimated Cost	\$1,172,000

# Option 2 Blended Learning

Item Description	Cost
Professional Development	\$ 30,000
Leveled Books	42,000
Additional Teachers	260,635
One-to-One iPads for Grades 3-8	500,000
MiFi Internet Access and Service	24,000
50 MiFi Devices	18,000
Materials and Supplies	40,000
Additional Technology Staff	100,000
Facilities	198,990
Personnel (Bus Drivers/Aides, Custodians, Hall Monitors, Nursing Assistants)	852,000
Additional Fuel Costs	274,000
Sanitation Supplies, PPE, & Thermometers	102,700
Total Estimated Cost	\$2,442,325



# Option 3 Full Resumption – 3ft Distancing

Item Description	Cost
Professional Development	\$ 30,000
Leveled Books	42,000
20 Additional Teachers	1,303,175
One-to-One iPads for Grades 3-8	500,000
MiFi Internet Access and Service	24,000
50 MiFi Devices	18,000
Materials and Supplies	40,000
Additional Technology Staff	100,000
Facilities	198,990
Personnel (Bus Drivers/Aides, Custodians, Hall Monitors, Nursing Assistants)	852,000
Additional Fuel Costs	274,000
Sanitation Supplies, PPE, & Thermometers	102,700
Total Estimated Cost	\$ 3,484,865

# Option 3 Full Resumption – 6ft Distancing

Item Description	Cost
Professional Development	\$ 30,000
Leveled Books	42,000
87 Additional Teachers	5,688,811
One-to-One iPads for Grades 3-8	500,000
MiFi Internet Access and Service	24,000
50 MiFi Devices	18,000
Materials and Supplies	40,000
Additional Technology Staff	100,000
Facilities	198,990
Personnel (Bus Drivers/Aides, Custodians, Hall Monitors, Nursing Assistants)	1,534,000
31 Additional Buses	3,193,000
Additional Fuel Costs	548,200
Sanitation Supplies, PPE, & Thermometers	102,700
Total Estimated Cost	\$ 12,019,701