

RETURN TO IN-PERSON LEARNING PLAN



SOUTHAMPTON COUNTY PUBLIC SCHOOL DIVISION

Southampton County School Board
Meeting
January 11, 2021

Dr. Gwendolyn Shannon, Division Superintendent



Mission and Vision

The mission of the Southampton County Public Schools is through the combined efforts of staff, students, families, and the community we will ensure a quality education in a safe environment that will prepare students to be successful leaders and productive citizens in an ever-changing society.

The vision of Southampton County Public Schools is that all students will be successful, productive, lifelong learners in an ever-changing world.



MAINTAINING EXCELLENCE

DIVISION GOALS

- Continuity of Health and Safety.
- Continuity of Nutrition.
- Continuity of Learning.
- Continuity of Resources.

GOAL 1: *Expand Learning Opportunities and Increase Student Achievement*

GOAL 2: *Expand Our Safe and Healthy School Culture and Climate*

GOAL 3: *Expand Professional Training and Improved Employee Retention*

GOAL 4: *Expand Community and Parental Partnerships*

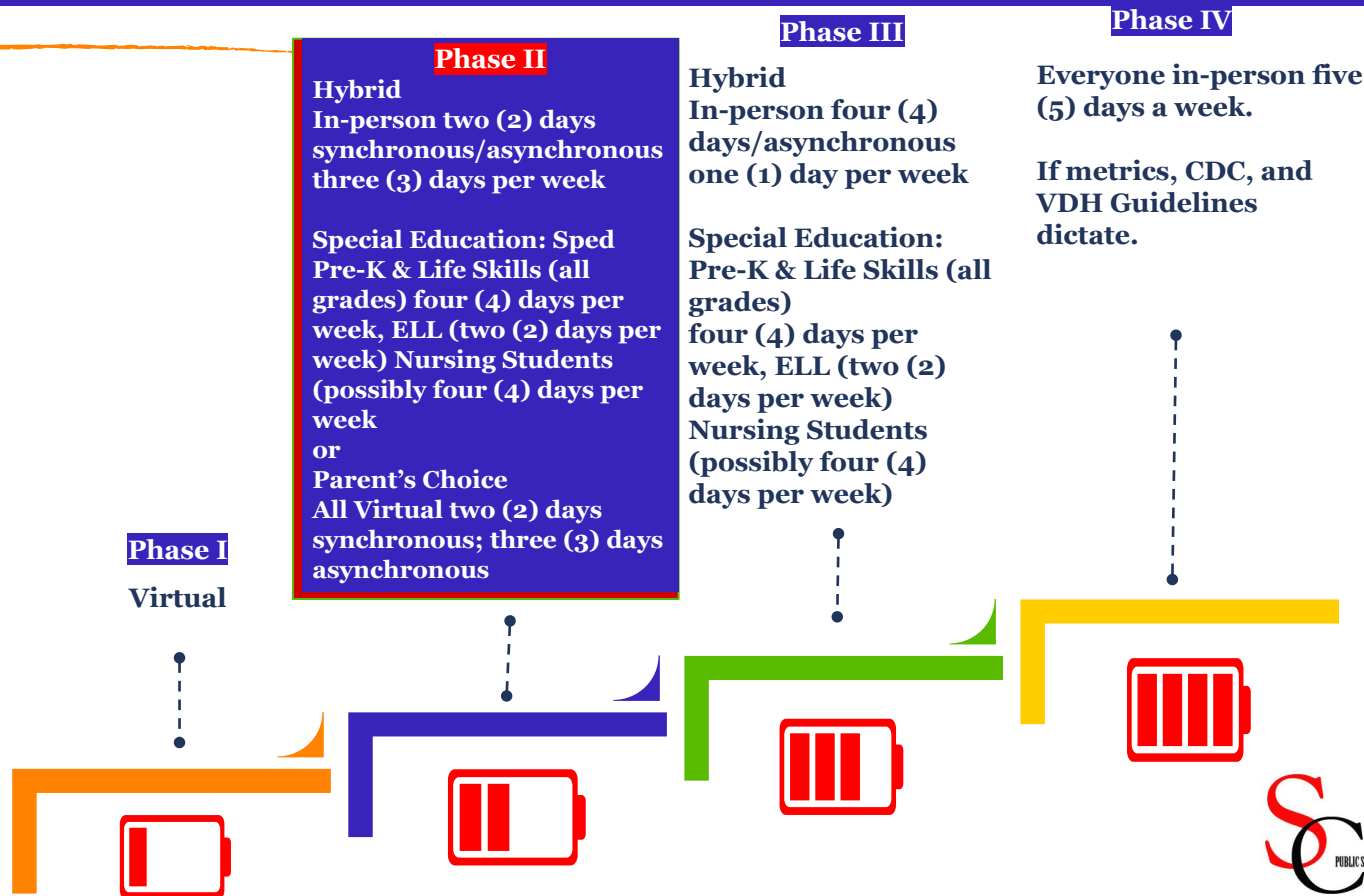
GOAL 5: *Expand Capital Improvement Efforts and Acquire More Fiscal Resources*

GOAL 6: *Expand Opportunities to Make School More Equitable for All Students*

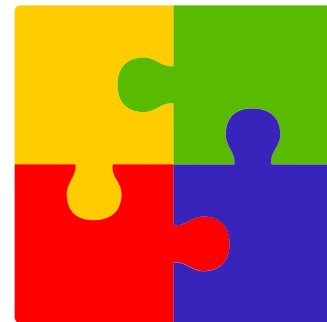
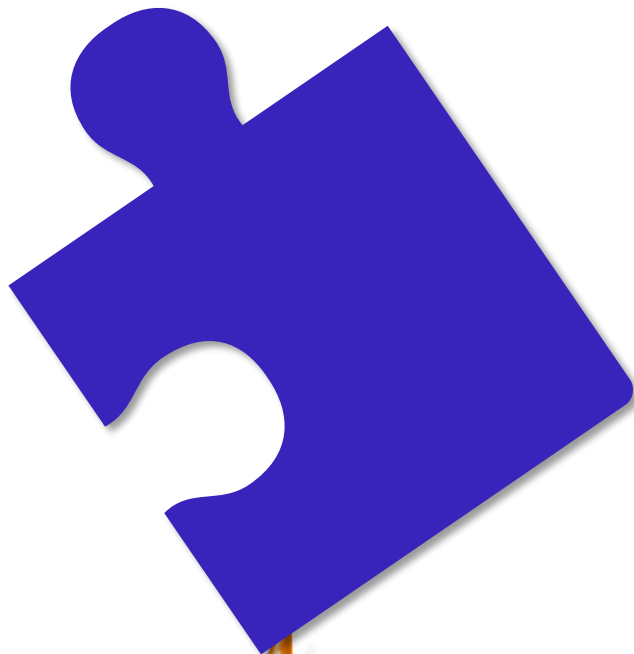


**Phases are flexible and we may move back and forth between phases based on metrics.*

Back to School Phases



PHASE II



Phase II



Mitigation Efforts

Health Screening Upon Entering Buildings, Health Screening Upon Entering Buses, Frequent Handwashing, and sanitation breaks, masks required, six (6) feet of social distancing if possible. Recommendation to Primary Care Provider for testing, contact investigating, quarantining & isolating when needed. If metrics, CDC, and VDH Guidelines dictate. (See Health Plan).

Attendance Mode

Hybrid
In-person two (2) days/asynchronous three (3) days per week
Special Education: Pre-K & Life Skills (all grades) four (4) days per week, ELL (two days per week), and Nursing Students (possibly four (4) days per week).
or
Parent's Choice
All Virtual two (2) days synchronous; three (3) days asynchronous.

Phase II

School Day	<u>Elementary</u> 8:45 a.m.-3:45 p.m. <u>Secondary</u> 7:30 a.m.-2:30 p.m.
Class Times	See Separate Chart. (Principals will create videos to share with parents & students).
Cohort Group Split	<u>Elementary & Secondary</u> Cohort A: A-I Cohort B: J-Z

*Modifications will be made to cohort groups in order to balance class sizes.

*Children in the same household will attend on the same day.



Phase II

Day Each Cohort Attends	Cohort A- Monday & Tuesday (In-person or Virtual) Cohort B- Wednesday & Thursday (In-person or Virtual) Both Cohorts and Virtual Learners/Asynchronous Friday
Graduated Attendance Approach	Life Skills Classes (all levels) Pre-K-3 Grade 6 Grade 9 The above grades will begin in-person learning <u>February 8, 2021.</u> Grades 4-5 Grades 7-8 Grades 10-12 The above grades will begin in-person learning <u>February 22, 2021.</u> (Contingent upon metrics and mitigation strategies).
Transportation	School Bus & Parent Drop off/Pickup



Phase II

Food Services	<p>Provided at School and Parent Pick up from School.</p> <p>Five (5) day meal boxes will be available for delivery each Friday. Families that are currently registered for meal deliveries, will not need to do anything at this time. Those that wish to register can still do so.</p>
Grades	<p>All assignments will be graded for accuracy. Minimum of one (1) grade and a maximum of three (3) grades will be recorded and posted each week. Assignments will be turned in by due dates.</p>
Attendance	<p><u>Select In-Person Classes</u> Students are expected to be <u>physically present</u> for in-person classes.</p> <p><u>Virtual Classes</u> Students are expected to be <u>physically present</u> during the designated class times for each virtual class.</p>

*Recorded lessons are available. Please talk with your teacher about paper packets as a last resort.



SOUTHAMPTON'S STATISTICS

Week	Total Number of New Cases per 100,000 (Last 14 days)	Percentage of RT-PCR Positive Tests	Percent Change in New Cases per 100,000 (Last 7 days)
January 11, 2021	2,195	11.3%	-13.5%
October 19, 2020	619.8	21.5%	236%
October 12, 2020	324.1	10.9%	-21.9%
July 27, 2020	238	9.1%	10%

RT-PCR (Reverse transcriptase polymerase chain reaction)

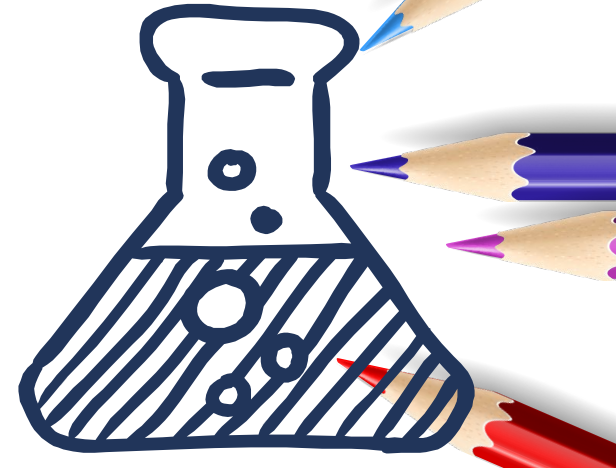
*Percent Positivity 15.3% VDH

*Percent Change 145.4% VDH

(Core Indicators)	Lowest risk of transmission in schools	Lower risk of transmission in schools	Moderate risk of transmission in schools	Higher risk of transmission in schools	Highest risk of transmission in schools	SCPS July 2020	SCPS October 2020	SCPS January 2021
CDC School Reopening Indicators								
Number of new cases per 100,000 persons within the last 14 days*	<5	5 to <20	20 to <50	50 to <200	>200	238.8	619.8	2,195
Percentage of RT-PCR tests that are positive during the last 14 days**	<3%	3 to <5%	5 to <8%	8 to <10%	>10%	9.1%	21.5%	11.3%
<p>Ability of the school to implement 5 Key mitigation strategies</p> <ul style="list-style-type: none"> • Consistent and correct use of masks • Social distancing to the largest extent possible • Hand hygiene and respiratory etiquette • Cleaning and disinfection • Contact tracing in collaboration with local health department <p>Schools should adopt the additional mitigation measures outlined below to the extent possible, practical and feasible.</p>	<p>Implemented all</p> <p>5</p> <p>strategies correctly and consistently</p>	<p>Implemented all</p> <p>5</p> <p>strategies correctly but inconsistently</p>	<p>Implemented</p> <p>3-4</p> <p>Strategies correctly and consistently</p>	<p>Implemented</p> <p>1-2</p> <p>Strategies correctly and consistently</p>	<p>Implemented no strategies</p>	Yes	Yes	Yes

Secondary Indicators	Lowest risk of transmission in schools	Lower risk of transmission in schools	Moderate risk of transmission in schools	Higher risk of transmission in schools	Highest risk of transmission in schools	SCPS July 2020	SCPS October 2020	SCPS January 2021
Percent change in new cases per 100,000 population during the last 7 days compared with the previous 7 days (negative values indicate improving trends)	<-10%	-10 to <-5%	-5 to <0%	0 to < 10%	>10%	10%	236%	-13.5%
Percentage of hospital inpatient beds in the community that are occupied	<80%	<80%	80 to 90%	>90%	>90%	75%	66.8%	74.4%
Percentage of intensive care unit beds in the community that are occupied***	<80%	<80%	80 to 90%	>90%	>90%			
Percentage of hospital inpatient beds in the community that are occupied by patients with covid-19***	<5%	5 to 10%	10 to 15%	>15%	>15%	9.6%	3%	17.1%
Existence of localized community/public setting COVID-19 outbreak****	No	No	Yes	Yes	Yes			

The COVID-19 Vaccine



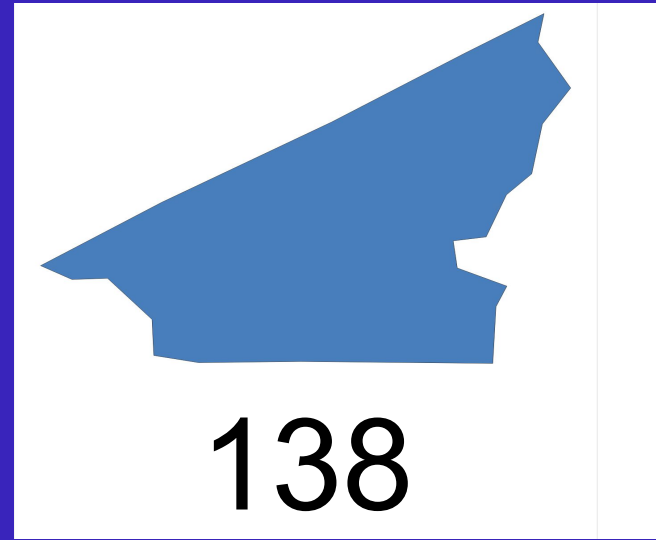
Vaccines Administered

Virginia

189,283 (At least one shot)

15,130 (Fully Vaccinated)

According to VDH's website 01.11.2021.



Southampton County - Phase 1a

Southampton's Educators-Phase 1b

Plans are to begin next week.

Setting up portal now for employee registration.

Pros Since October

- The vaccine is being administered.
- More people have antibodies.
- More people are immune.
- There are more cleaning supplies.
- There are more masks.
- More mitigation strategies are in place.
- More research is available about COVID-19.
- There are more opportunities to replenish supplies.

Cons Since October

- The virus continues to spread.
- Mutant strains of COVID-19 have surfaced in some states and are spreading.
- Current VDH Metrics show our community as high risk.
- Some students are likely continuing to experience learning loss.
- All students may not be thriving with virtual learning.
- Some students are engaging in minimal to no social interaction.
- Some students are experiencing isolation.



Children's Mental Health

Coronavirus disease 2019 (COVID-19) is impacting our children and youth.

Children and youth can get sick with COVID-19, but their social, emotional, and mental well-being can also be affected.

Changes in their routines, breaks in learning or changes in where and how they learn, feelings of loss of security and safety, and physical distancing from family and friends can create a great amount of stress and anxiety.

Trauma faced at this developmental stage can continue to affect them across their lifespan.



Superintendent's Recommendation

3rd Nine Weeks



**Phase II
Reopening**

**In-person & Virtual Learning
(Parent's Choice)**

*Only if metrics are favorable according to CDC & VDH guidelines.

Hybrid
Synchronous in-person learning
two (2) days per week
Asynchronous three (3) days per
week

PANDEMIC

COVID-19

February 8, 2021 (Grades Pre-K-3; 6 & 9, All Life Skills Students, and English Language Learners)

February 22, 2021 (Grades 4 & 5; 7 & 8; 10, 11 & 12)

