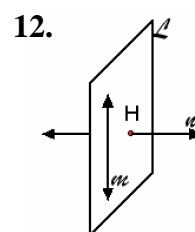
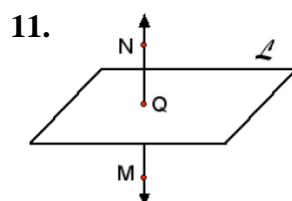
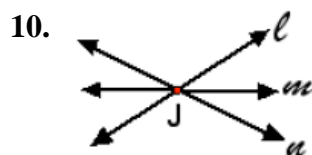
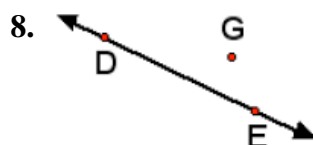


**Classwork 1-1 Point, Line, Plane**

*Using the appropriate labels sketch the following relationships.*

1.  $\overline{AB}$  intersects  $\overline{CD}$  at  $E$ .
2.  $X$  is not on  $\overline{AB}$ .
3. Points  $L$ ,  $M$ , and  $N$  are collinear.
4. Points  $L$ ,  $M$ , and  $N$  are noncollinear.
5.  $\overline{RS}$  intersects plane  $\mathcal{Q}$  at  $P$ .
6. Plane  $\mathcal{Q}$  intersects plane  $\mathcal{R}$  at  $\overline{EF}$ .

*Using appropriate notation describe the following sketches.*



***Classwork 1-1 Point, Line, Plane***

*Use the figure to the right to answer the following questions.*

13. How many planes make up this object?
14. Name the planes that make up this object.
15. Name the intersection of  $\overleftrightarrow{AB}$  and  $\overleftrightarrow{CB}$ .
16. Name the intersection of plane  $BFD$  and  $\overleftrightarrow{AC}$ .
17. Name the intersection of plane  $AEF$  and  $BCD$ .
18. Which two planes intersect at  $\overleftrightarrow{EF}$ ?

